

Mr. Giansante



Technical Details of Publishing

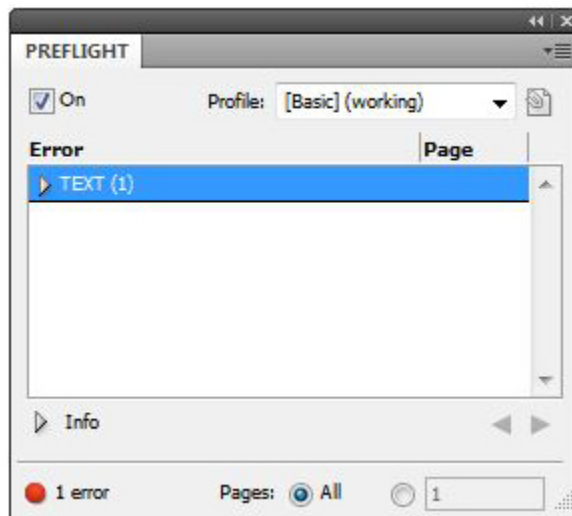
May 2013

Checking for Errors (Preflight)

Before a page is exported to PDF, it must be checked for technical errors. In the status bar at the bottom of the document, you will see a Green Light (everything is okay) or a Red Light (there are errors).



If you see a Red Light, double-click on it to bring up the "Preflight" panel. There, you can view the errors. Double-click on the error to get more details



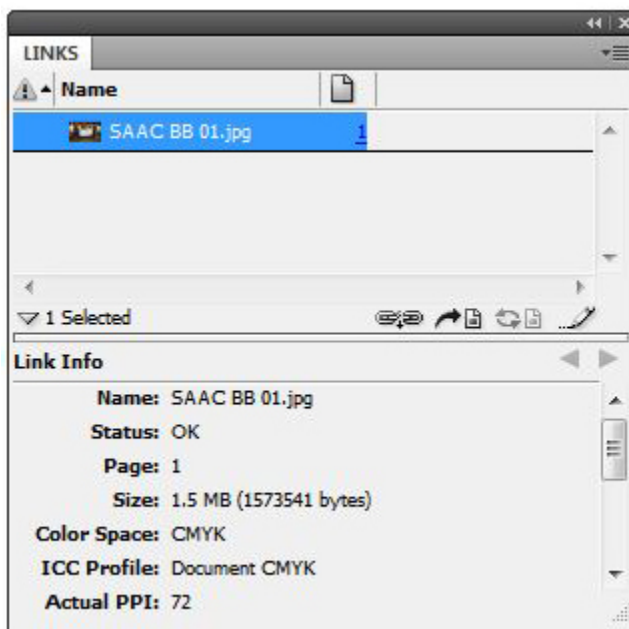
Links Panel

The "Links" panel is very important to make sure images are properly linked and in the correct format.

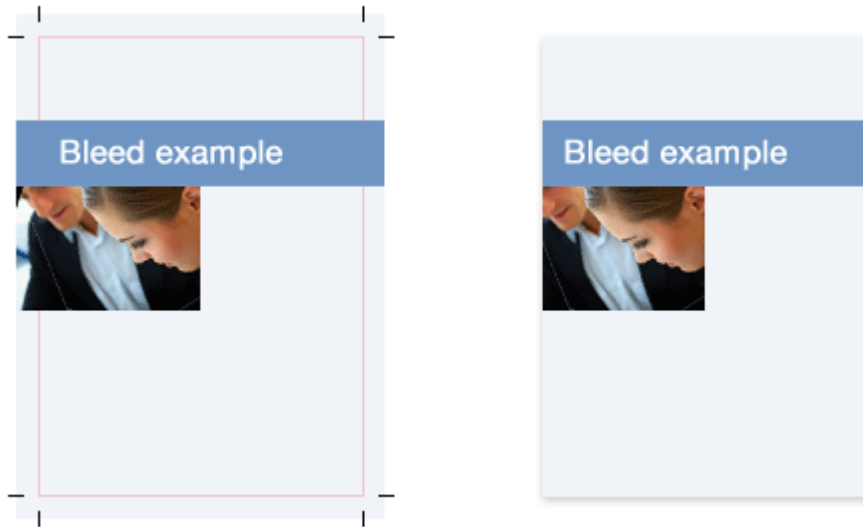
Go to **Windows | Links** to open the panel.

You can confirm that the image is either in Grayscale or CMYK format and you can also see the location of the image (preferably, it is in the exact same folder as the InDesign document).

The blue number next to the image is the page on which the image is. Since all our documents are one page, the number should always be "1".



Bleeds



Images that "bleed" off the page must extend 5 mm beyond the page's limit.

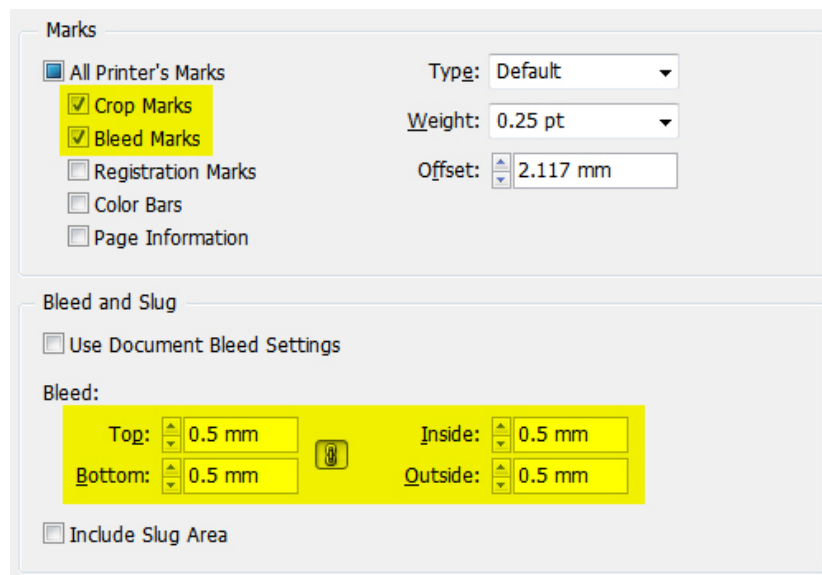
Image that do NOT "bleed" must be at least 5 mm inside the page's limit.

Text should be at least 5 mm inside the page's limit.

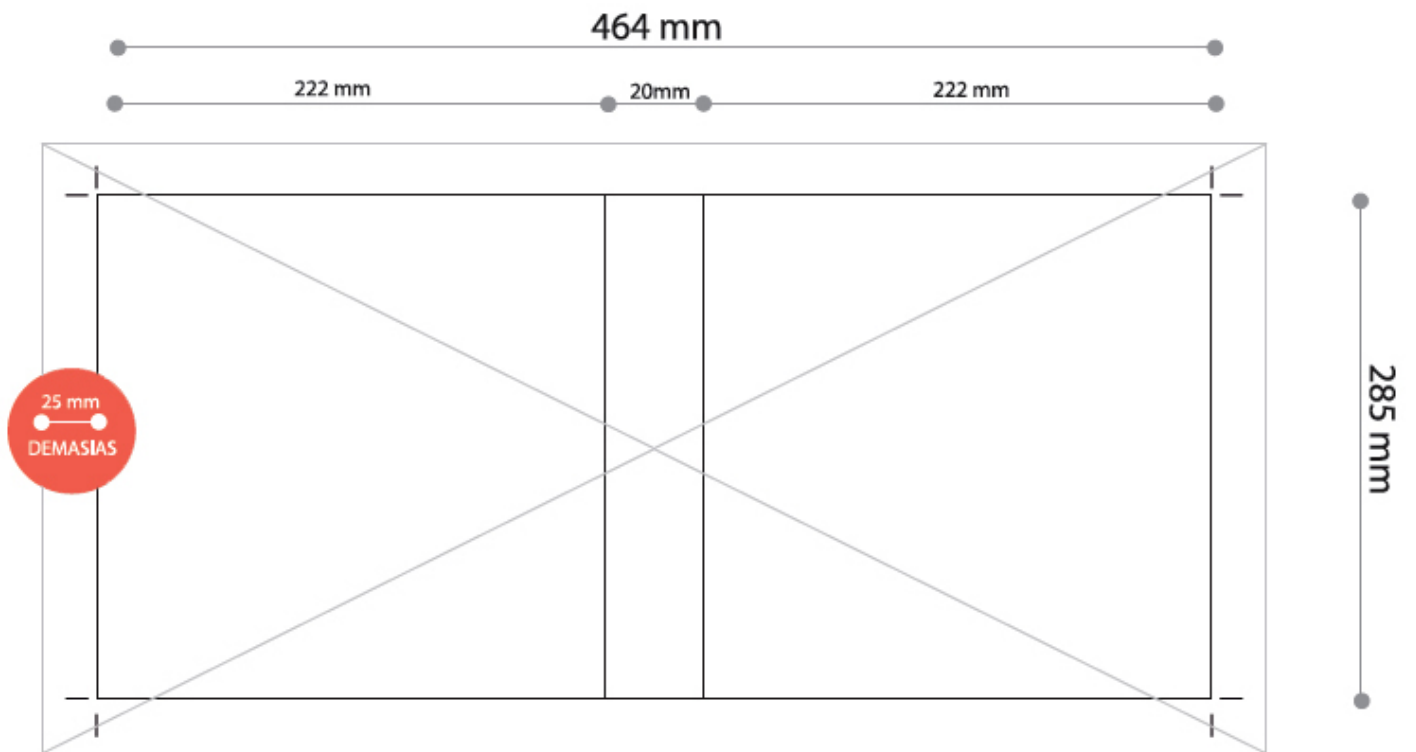
Text should be at least 10 mm inside the page's limit on the "gutter".

Exporting as a PDF

In InDesign, when saving the document as a PDF, set the following properties to ensure the PDF is correct:



The Cover



The front cover (tapa), spine (lomo) and back cover (contra tapa) should be in a Photoshop Document (PSD).

The settings should be 300 dpi and CMYK.

You can request a template from Mr. Giansante.

CMYK Shape on a Grayscale Page

In InDesign, on a grayscale page, a drawn shape (for example: a rectangle behind some text) will be in CMYK. This is not desirable.

So far, we have not found a way to remedy this.

So, we need to open the exported PDF in **Adobe Acrobat Pro** and:

Advanced | Print Production | Convert Colors

Within the dialog you can select the document colors you'd like to convert (CMYK, RGB, etc...) and change the action underneath to "convert". Then under "Destination Space", select a profile such as "Gray Gamma 2.2"